

2019 Uniform Data System (UDS) Report

Counting Total Patients Served at Health Center Sites Located in or Immediately Accessible to a Public Housing Site

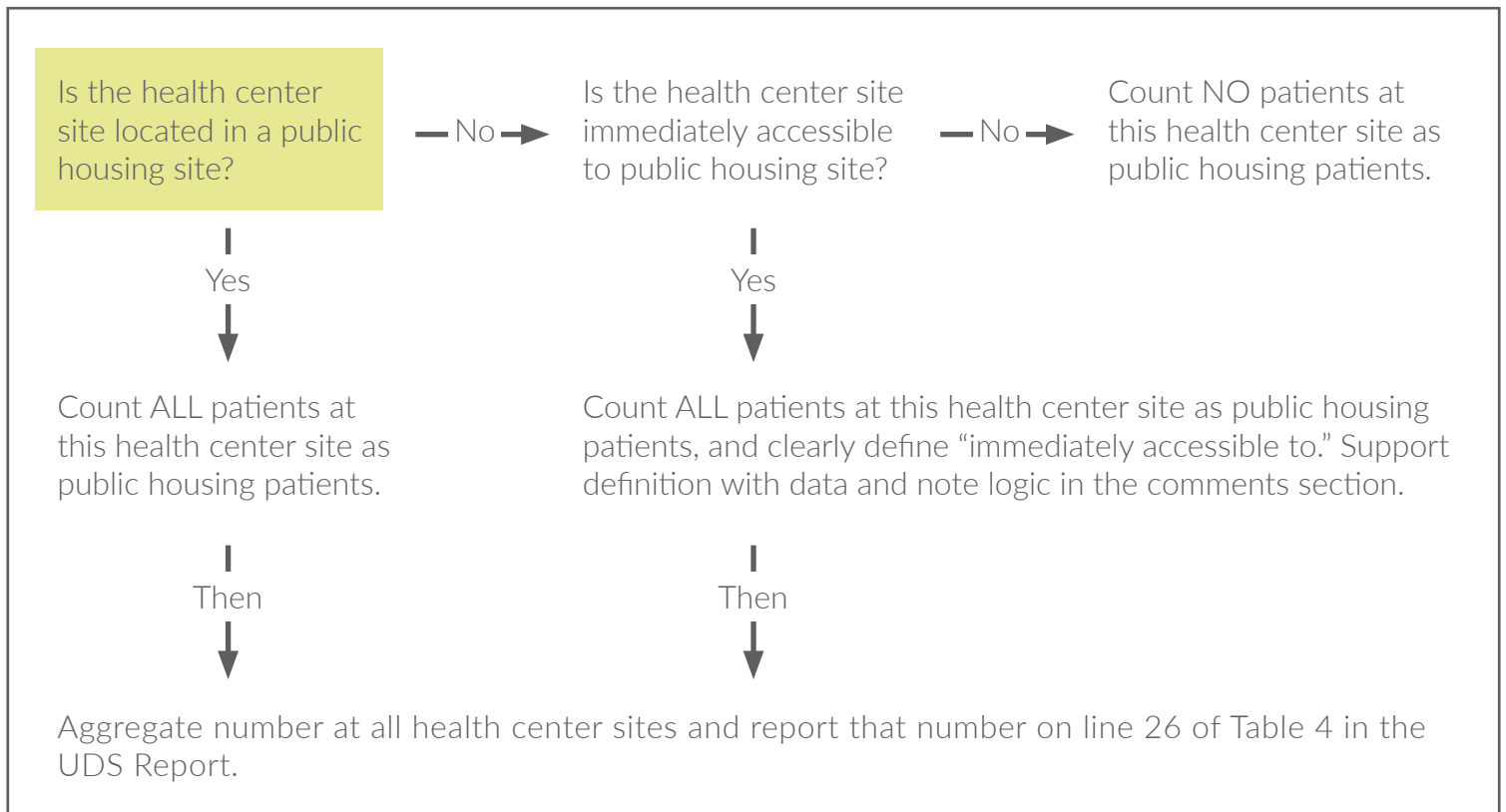


Background

In 2014, HRSA required all health centers organizations to report the number of patients seen at health center sites located in or immediately accessible to public housing on line 26 of Table 4 (Selected Patient Characteristics) of the UDS report. According to the HRSA Bureau of Primary Health Care (BPHC) 2019 UDS Reporting Instructions Manual ([2019 UDS Manual, page 43](#)), health center organizations should aggregate the total number of patients who receive care at accessible sites, regardless of the sites' funding status or whether patients are residents of public housing. Health center organizations who receive section 330(i) funding for one or more sites will continue to complete the special populations grant report for only 330(i) sites.

Strategy

Report all patients seen at the health center site if it is located in or immediately accessible to agency developed, owned, or assisted low income housing, including mixed finance projects. Exclude from the count, housing units with no public housing agency support other than Section 8 housing vouchers.



Determining Accessibility to Public Housing

Health centers must provide a rationale for being in or immediately accessible to public housing on the UDS report. Visualizing the distance between health center sites and public housing sites as well as identifying geographic, transportation, and cultural aspects that influence 'immediate accessibility' will help support determination of accessibility. Health centers are ultimately responsible for making their own determination of immediate accessibility to a public housing site.



If Your Health Center Meets **Any One** of These Requirements, It Is Considered "Immediately Accessible to a Public Housing Site"

- Is housed in or accessible to a public housing authority-owned property.
- Has a long-standing history of serving residents of public housing.
- Is near a highly-traveled route (subway, bus, car, bike, foot). The National Nurse-Led Care Consortium encourages health center sites and primary care associations to map health center site locations against the most up-to-date public housing site information (via resources like the [UDS Mapper](#)).

For More Information

Please contact assistance@phmc.org for additional guidance.

This project is/was supported by the Health Resources and Services Administration (HRSA) of the U.S. Department of Health and Human Services (HHS) as part of an award totaling \$1,350,000 with 100% financed with non-governmental sources. The contents are those of the author(s) and do not necessarily represent the official views of, nor an endorsement, by HRSA, HHS, or the U.S. Government. For more information, please visit HRSA.gov.

Learn more about the UDS Report on:

NurseLedCare.org